



FEBRUARY | 2017

Business Office

480-373-7000

Hours

8:30am-4:00pm

Activities Office

480-373-7700

Director

480-373-7725

Hours

8:30-3:30pm

Activities Fax

480-986-0052

Front Gate

480-373-7911

Park Manager

Rhonda Ciacco

Business Office

Manager

Sue Isbell

Assistant Office

Manager

Kay Kreun

Sheila Bishop

Activities Director

Sue Arneson

Activities Assistant

Jill Belcher

Kitchen Manager

Jerry Colling

Kitchen Volunteer

Coordinator

Tracy Gagnier

Set-Ups

William Shelton

Maintenance Manager

Kelly Haragan

Mail Room

Kim Gulvas

Whatever She's Selling, We're Buying

by Dale Dauten

You could guess that Sue Arneson had a successful career in sales. She has that infectious energy that makes you want to join in, one of those people you just can't imagine saying no to. As a girl, she toyed with becoming a nun, and if she had, well maybe everyone at Silveridge would now be Catholic.

"That's how you become part of the park"

I sat down with Sue to talk about how she came to be the Activities Director at Silveridge and we soon were discussing her past career. For 30 years she worked for a national interior design/decorating company, many of those years as Director of Sales. She had a hundred sales consultants working for her, and became a certified instructor, doing training and recruiting throughout the firm. She says, "The thing I learned in sales that keeps coming back to me is Interest/Enthusiasm/Date. You have to find what people are interested in, then get them enthused and then set the date, by which I mean that you get a commitment to get started."

She then went on to explain how she puts that principle to work at Silveridge, describing what transpires when she meets a new resident, exploring their interests, then getting them enthused -- by describing how volunteering is the way to get to "know people and know the park" -- then figuring out the day they'll start.

She added, "The volunteers make everything possible. That's how you become part of the park." No wonder she has 300 volunteers, happy to pitch in.

With that, Sue pulled out her list of groups and activities. "There are 50 of them -- 50! -- so if you have interests, you'll find others to share them with. And that doesn't include the events, all the boogies, dances, shows and concerts -- there are 35 of those this season."

But let's back up, and fill in Sue's journey to join us at Silveridge.



The Activities Team

Instead of the Message From Sue that usually appears in this space, Sue suggested that we include the Activities Team.

When she talked about that team, she picked up a wood carving of a single word that she says fits the philosophy of her group:



In addition to all those volunteers, Sue has an Activities Team: there's Jill Belcher, Assistant to the Activities Director, William Shelton, who heads setup/prep, and Jerry Colling and Tracy Gagnier, who run the kitchen.



Working on the Newsletter are volunteers from left to right: Jerry Byker, Esther Rusk, Judy Albright, Marjorie Byker and Richard Rusk. This team puts the inserts in the newsletter. Another team collates all the inserts ahead of time.



Pictured are just a few of the 100 and volunteers serving at an event. The kitchen serves at over 70 events throughout the year. Chef Jerry Colling and Head Volunteer Coordinator, Tracy Gagnier pictured on the left.



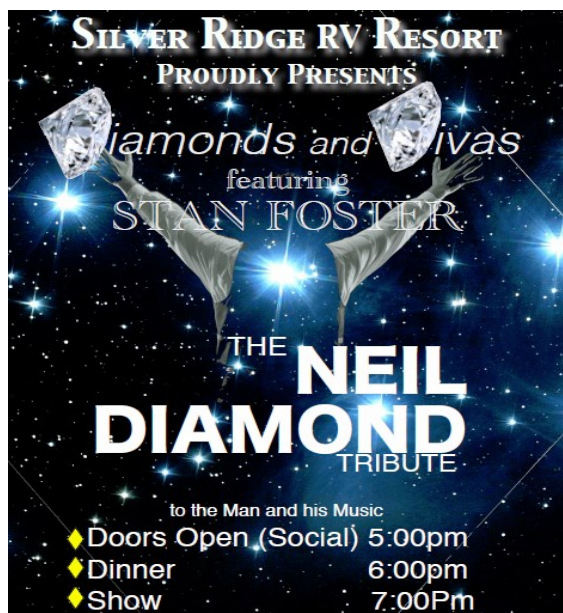
These gals cheerfully volunteer in The Activity Office. Pictured from left to right are: Back Row: Annette Viscomi, Marg Facktor, Lois Oberg, Nancy Swain, Sandy Kennedy, Linda Huss and Jill Belcher. Front Row: Sharon Beckett, Maxine Flentje, Marge Ranstrom, Sue Arneson and Karilyn Martinsen. Not pictured are Ginny Wander and Cheryl Fowler. Currently the Activity Office is handing out the new Business Directories. Please come down and sign for yours. The Activity Office is where you purchase all your tickets, order the Az. Republic, buy stamps, "Lost and Found" and does copies and faxes. Jill types all the messages on Channel 6. There are many more volunteers, but limited space not everyone could be pictured. Sue is grateful for the many helpful hands that make the Activity Department run successfully!



February Celebrations



**Diamonds and Divas
Dinner Show
Thursday, Feb. 2nd, 5:00pm**



**Cahal Dunne
Valentine Dinner Show
Thursday, Feb. 16th, 5:00pm**



Freddie and Sheila Show

**Dinner
Delight**

**Thursday,
Feb. 23rd
4:30pm**



**Music on the Green
Feb. 17th, Theater 4:00pm**

Bring your lawn chair and BYOB and enjoy some music by Dave Filsinger.
On March 4th Elvis will be "On the Green"
Mark your calendars for these two special events!

**Pops Orchestra
Thursday, Feb. 9th
7:00pm**

This is our Spring Concert from our special friends from the POPS. Tickets are only \$7.00!





February Boogies

The Fairlanes

Tuesday, February 7th, 4:30pm



Sammy Cee and his band will once again entertain us with 50's and 60's music that will make you want to get up off your seat and Dance!

Johnny K and Kompany

Tuesday, February 14th, 4:30pm



Johnny K is back !!
This is our special Valentine Dance.
*Optional: Ladies, wear your prom dresses and men, dress up in a shirt and tie.
Bring back the memories from yester year and have a ball!!!

Needham Twins

Tuesday, February 21st, 4:30pm

The Needham Twins have been entertaining us for years! They remain a popular band throughout the Valley and Silverridge enjoys them as well! They play a variety of music but like the rock and roll.



Desert Drifters

Tuesday, February 28th, 4:30pm



The Desert Drifters entertained us on New Years Eve and now they will be back again for our Rocky Top Boogie. This is a Country Band that plays all the Country favorites. Wear your cowboy hats!

Having Fun on Boogie Nights



February Breakfasts



Breakfast is everyone's favorite meal to eat out! Chef Jerry and many volunteers will be cooking and serving you breakfast. Come to the Social Hall on **Saturday, Feb 11th and Saturday, Feb. 25th** 7:00-9:00 am and get breakfast for only \$5.00! You can enjoy a hot breakfast of sausage or ham, eggs, toast or pancakes, (plain or blueberry) coffee and juice.



"Crazy in the Kitchen" The Breakfast team served 279 Breakfast on the Club Expo Day. Thank you cooks and servers for making this breakfast the most served ever! Pictured are Sharon Beckett serving breakfast and frying eggs are Betty Neill, Garry Campbell and Roger Benson.

Market Day

Sat., February 18th 9:00-12:30pm

We will have over 50 vendors tempting you with unique treasures. Bring your money because the Woodworkers are having their annual fundraiser Bake Sale. There will be all kinds of homemade goodies. The woodworkers will have their 50 -50 tickets for sale and the pickleball club will have their their basket raffle. The Piecemakers are having their final ticket raffle for their quilt. The winner will be drawn! When you need a break go the Social Hall and sit down with your friends and enjoy a delicious lunch served by our kitchen crew.



Two Special Club Dinners

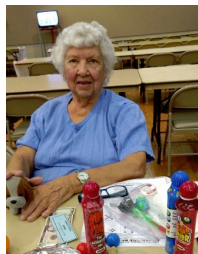
The Annual Chili Feed will be Friday, Feb.10th. Social Hour at 4:30pm. Serving at 5:30pm. Cost is \$7.50 per ticket 50/50 Raffle Tickets will be sold. Tickets sold through the Computer Club.



The Softball Club will once again sponsor their Spaghetti Dinner on Friday, Feb. 24th. Doors open at 4:30pm. BYOB and Place Settings. Dinner at 5:30. There will be 50/50 Drawing. Tickets are \$8.00. Both Chile and Softball tickets are available at the Activity Office and through members.

B I N G O

Every Wednesday 6:30pm.



Dorothy, Big Winner

Food Served from 6:00pm.

Dinner is \$7.00 / \$6.00 with Bingo Ticket

Sandwiches are \$3.50. Soda, water, popcorn, pies, and cookies sold.

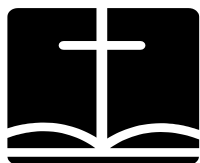
Check with the Activity Desk or on Channel Games include:

Double Action, Odd/Even, Money Ball,

King and Queen Bingo Payouts– Door Prizes!!!

Exciting New Games!!! Reduced Costs!!!

**\$1,000.00
Progressive**



Silveridge Christian Fellowship

Our service is every Sunday at 9:00am in the Ballroom. We invite you to join us for our non-denominational service.

Pastor Bob continues to teach Wednesday night Bible study at 7pm in Room 5. You are invited to join us for this time of study, questions and discussion. Everyone is welcome to join the fellowship and fun of the **Silveridge Choir** while practicing the songs and hymns of the faith. The choir sings during Silveridge Fellowship Sunday services. Practice is Wednesday at 9:00am in Room 1.



The East Valley Chorale will present a concert of joy, hope, love and inspiration on Sunday, Feb. 12th at 6:00pm. A freewill offering will be taken.

**thank
you**



United Blood Services
Find the hero in you.

Silveridge RV Park Blood Drive

United Blood Services thanks you.

At the blood drive, 26 lifesaving donors stepped up to donate, resulting in 20 procedures for our community and reaching 125% of the parks goal.

Your efforts are greatly appreciated.



BACK BY POPULAR DEMAND

Marilyn Osborne Stewart

will present a lecture on the Australian outback in the SilverScreen theater on Friday, February 17th. Marilyn is a missionary kid who grew up with the Aborigines and speaks one of their many dialects.

NOT TO MISS!

Celebration Of Life



Rita Helander

December 20th.

Dottie Toner

February, 2017



Thank you to Lorna and Allan LePoudre for their Sports Display in the Showcase window. Thank you also to Nancy Lambertson who designed the window last year.

Oh Say Can You Hear?

Kudos to Rich Brown and Garry Campbell who are always there to help Sue with the Sound.



Food Handlers Course

If you want to get a license to work with food for your club or your current license is expiring, a new class will take place in the social hall on Wednesday, February 8th at 10:30am. The cost is \$15, to be paid in advance.

ESSENTIAL OILS



A new class by Jackie Bradford is starting on January 31, at 10:00am in room 4 on essential oils. What are they? How do you use them? All these questions and more will be answered.



Bringing in the New Year



C
L
U
B

E
X
P
O



The "Love Bug" from
Rockin through the Decades



Poodle Skirts and White Sport Coats



Disco Sisters at The BeeGees



MC6 Wine and Cheese Night



New tables in the Computer Room and Room 9



Farmer's Daughter

"I was a farmer's daughter," Sue began. "I was the oldest daughter, out of eight kids, and so I became my mother's right hand, the Second Mom." This was on a family farm near Highmore, South Dakota. (If you're thinking that story sounds familiar, our GM, Rhonda Ciacco, was also raised on a farm in South Dakota.)

Sue went to a one-room schoolhouse, all eight grades in that one room, and at home she cleaned chickens and cooked meals. She smiled as she recalled one detail: "I was the baker. We baked every day." That lasted till the local priest spotted her potential and helped her get a scholarship to go to boarding school, a Catholic high school, four hours away, run by nuns. Then it was off to Northern State College. She says of that time, "I got close to becoming a nun, but met my husband instead." That's Jeff, who was in the Air Force, stationed in Grand Forks. They married, moved to Minnesota, Jeff left the military to take a series of police jobs around the Twin Cities area, they had three kids, and soon Sue found her way into sales.



Coming to Silverridge

Sue and her husband, Jeff, made visits from Minnesota to Arizona, and came often to Silverridge. That's because Sue's mom, Marjorie, had become a seasonal resident at the park. It wasn't too long till Sue and Jeff wanted more of Silverridge, and in 2005 bought a place in the park of their own. "Why not? was our thinking. We liked the people and we liked the park."

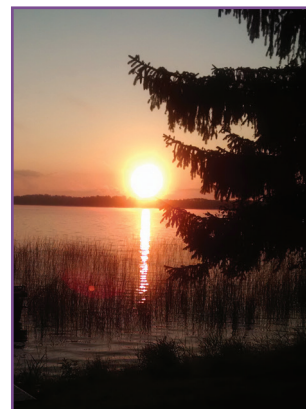


Then, in 2010, Sue got word that the Activities Director, Donna Ward, had announced that she'd be retiring. Sue had herself been retired a while, and found herself reacting to the news of Donna's departure by thinking, "I could do that." Oh, yes, she could. After a year as Donna's assistant, she took over the Director's job. Of that decision, Sue said, "It was a good fit. I knew the park and the park is family. I knew this was God's calling for me for this time."

How did her husband react to her going back to work? She reports that "Jeff is my number one volunteer."

They spend the season, from September to April, at Silverridge and then return to their beloved home on Round Lake in Minnesota. This year they'll be going back to the new pontoon boat they just bought and Sue asked me to include this:

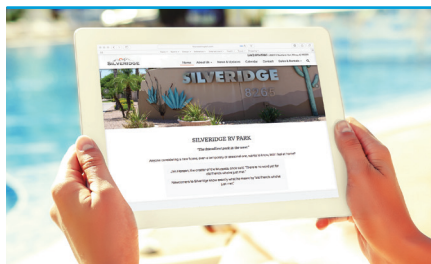
"Jeff and I would like to invite any of our Silverridge family to come for a visit and have a ride in the new boat."



The Silverridge Family

Last year, Sue undertook the labor-intensive project of creating a book about Silverridge and its residents; she chose the title, *The Silverridge Family*. That title expresses exactly how she thinks about the park. She says, "My philosophy is find out what people want and give it to them. As we get new residents, I can see the tastes and interests are changing and we're changing with them."

And then there are all those clubs and activities: "We just had a Club Expo and nearly 300 people showed up to have breakfast and to see what clubs they might want to explore." And that's all it takes – if you have an interest, Sue will get you enthused and set a date to get you started.



Empire Communications is our exclusive provider for Direct TV.

Instead of simply getting installers sent out from an out-of-town office, we get personal attention from Empire, nearby in Mesa. The folks from Empire are joining us for upcoming coffees, and will provide complete details. Empire Communications: 800-403-8402.

Send your thoughts/comments or story suggestions to Dale -- dale@dauten.com.